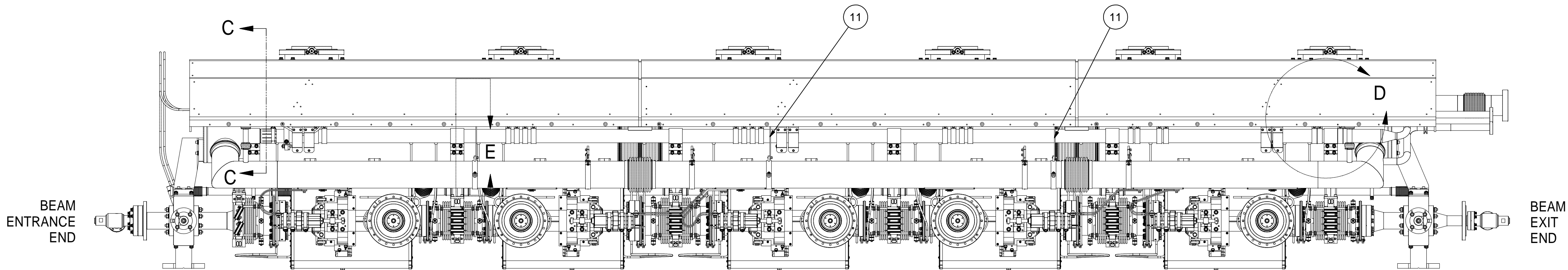
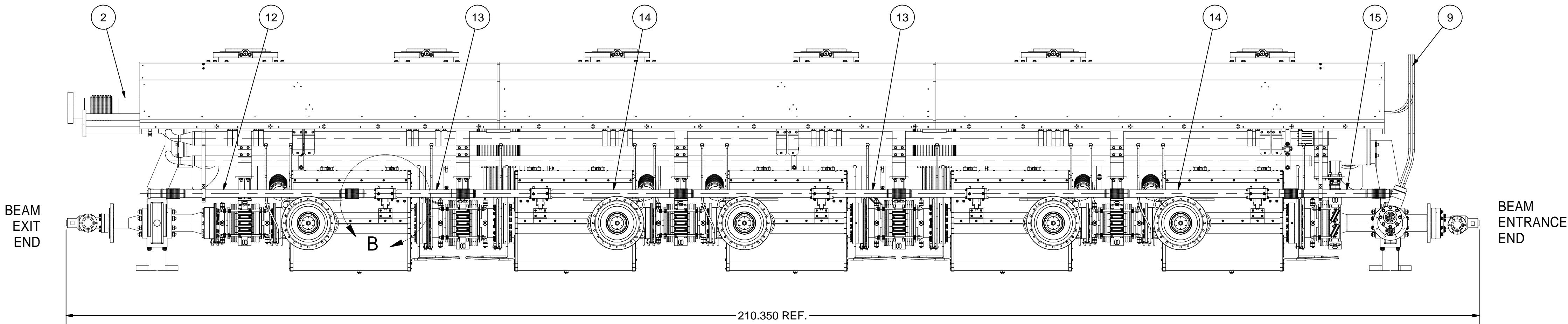
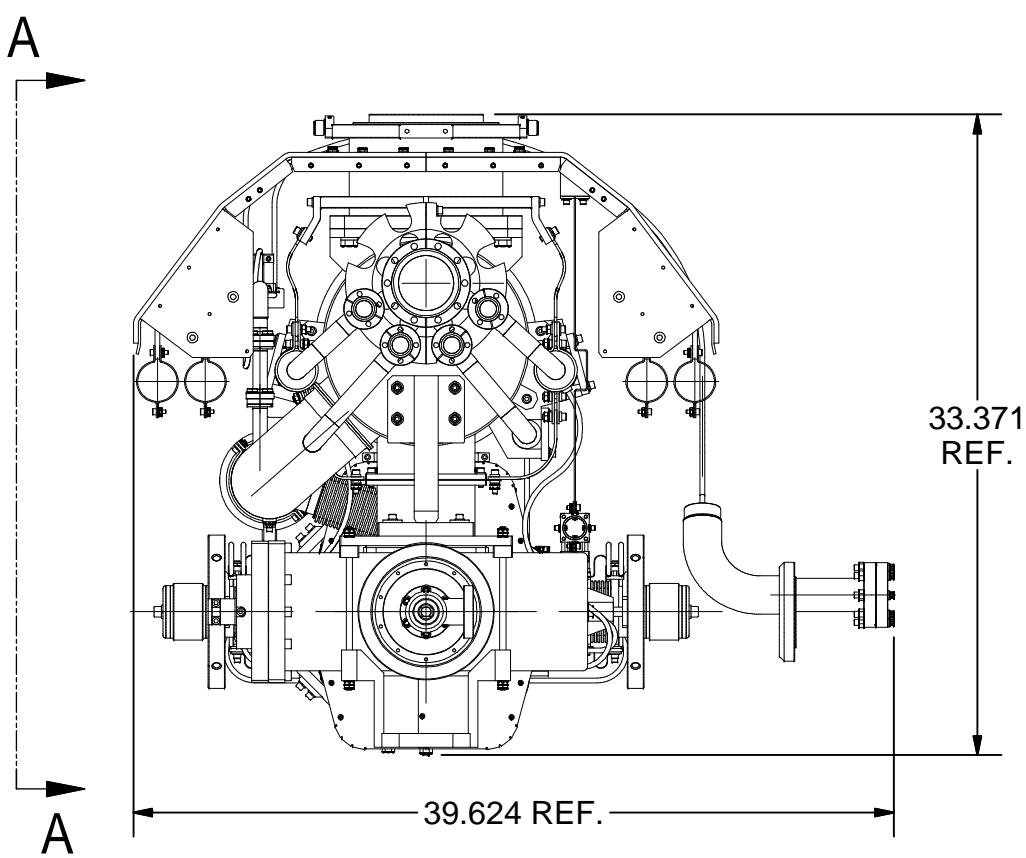
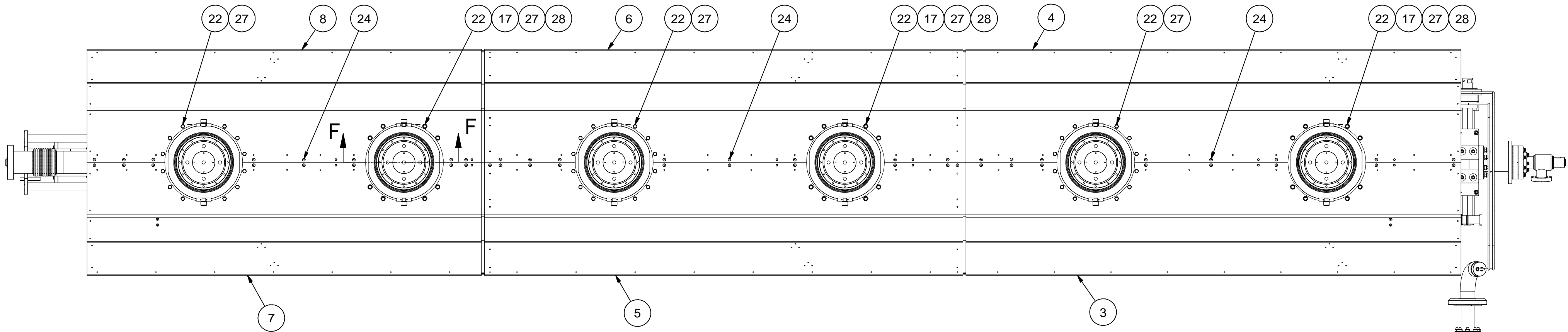


REVISIONS			
SYM.	ZONE	DESCRIPTION	DATE APP.



VIEW A-A


1 ASSEMBLY, STEP 5

FILE NAME: 7102-094
SHEET NO.: 1
DFT. SCALE: 1:10
MATERIAL:
QTY: 1 PER CRYOMODULE
NOTES: 1. SEE NEXT SHEET FOR SECTIONS C-C AND F-F,
AND DETAILS B, E, D.
2. SEE SHEET 3 FOR ISO VIEWS.

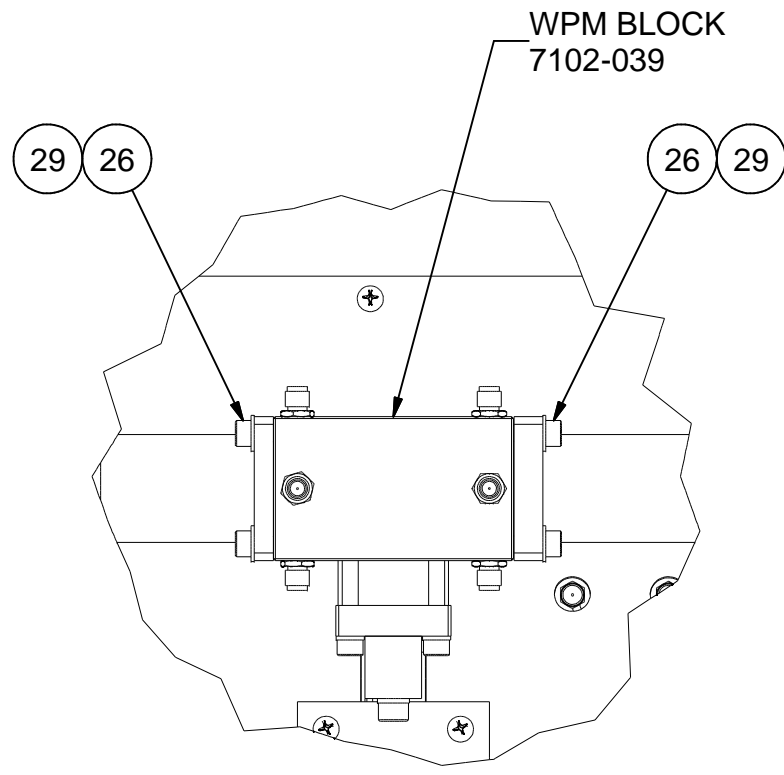
29	Purchased	#8 Washer, 0.375 OD, 316 SS	40		McMaster-Carr's 90107A010
28	Purchased	1/4 Washer, SS	24		McMaster-Carr's 96659A106
27	Purchased	1/4 Spring Washer, SS	72		McMaster-Carr's 92146A029
26	Purchased	#8-32 x 1/2 Socket Head Cap Screw, 316 SS	40		McMaster-Carr's 92185A194

25	Purchased	#8-32 x 3/4 Socket Head Cap Screw, 316 SS	12		McMaster-Carr's 92185A197
24	Purchased	#10-32 x 1/2 Flat Head Hex Socket Cap Screw, SS	24		McMaster-Carr's 92210A302
23	Purchased	1/4-20 x 1/2 Socket Head Cap Screw, SS	12		McMaster-Carr's 92196A537
22	Purchased	1/4-20 x 3/4 Hex Head Cap Screw, SS	60		McMaster-Carr's 92240A540
21	Purchased	1-1/3" CF Gasket	2		Varian's FG-0133-CU

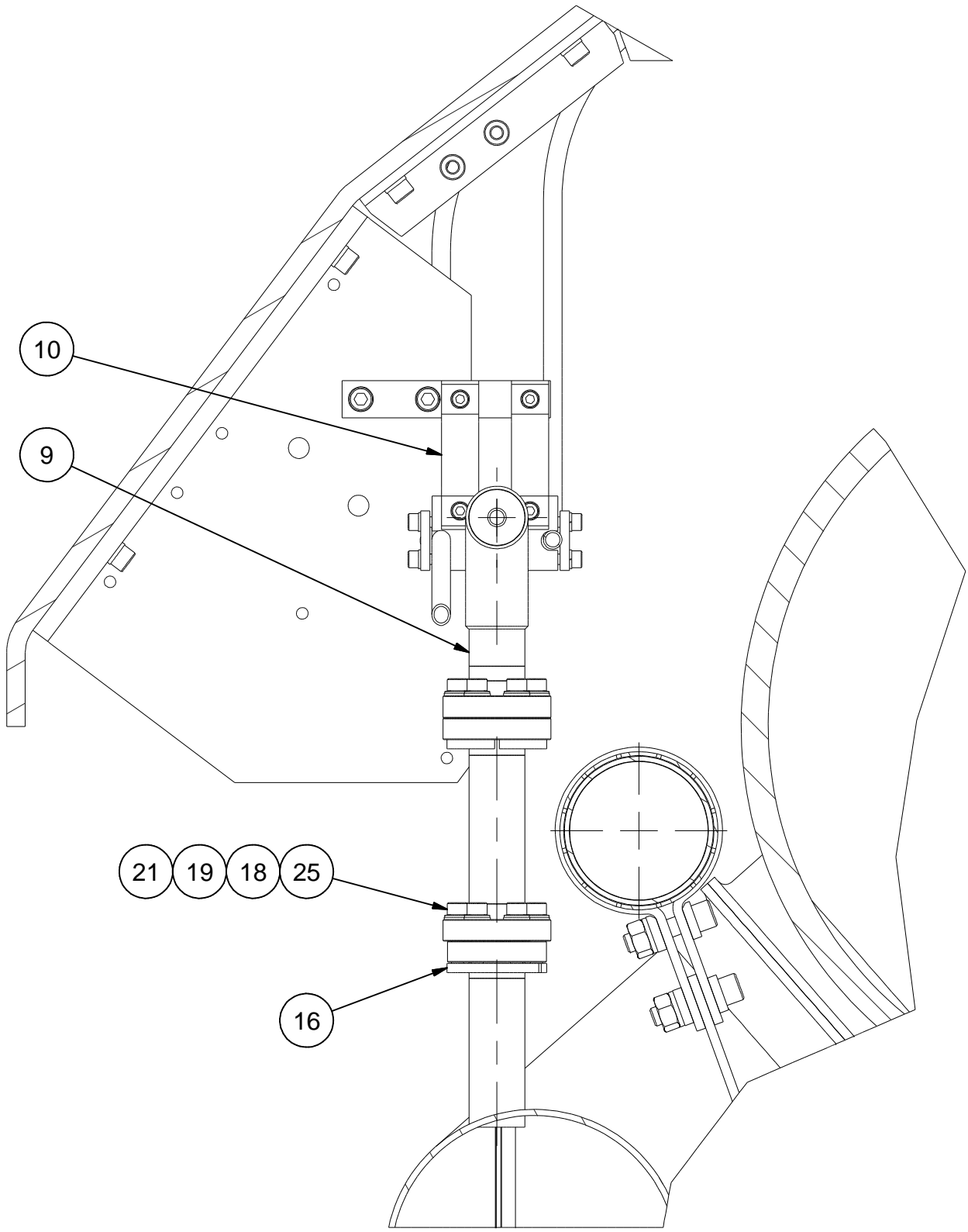
19	7102-024 (Sh.1)	M4 WASHER MODIFICATION	12						
18	7102-024 (Sh.1)	#8 BELLEVILLE SPRING WASHER MODIFICATION	12						
17	7102-066 (Sh.54)	SPACER TUBE	24						
16	7102-024 (Sh.1)	8-32 NUT PLATE	2						
15	7102-063 (Sh.3)	WPM TUBE4 SUB-ASSEMBLY	1						
14	7102-063 (Sh.3)	WPM TUBE3 SUB-ASSEMBLY	2						
13	7102-063 (Sh.2)	WPM TUBE2 SUB-ASSEMBLY	2						
12	7102-063 (Sh.2)	WPM TUBE1 SUB-ASSEMBLY	1						
11	7102-087	2 K WIRES TUBE SUPPORT	3						
10	7102-121	2 K WIRES TUBING 80 K HEAT SINK	1						
9	7102-064	2 K WIRES TUBING	1						
8	7102-066 (Sh.8)	EXIT SECTION TOP LEFT PLATE SUB-ASM	1						
7	7102-066 (Sh.7)	EXIT SECTION TOP RIGHT PLATE SUB-ASM	1						
6	7102-066 (Sh.6)	MIDDLE SECTION TOP LEFT PLATE SUB-ASM	1						
5	7102-066 (Sh.5)	MIDDLE SECTION TOP RIGHT PLATE SUB-ASM	1						
4	7102-066 (Sh.4)	ENTRANCE SECTION TOP LEFT PLATE SUB-ASM	1						
3	7102-066 (Sh.3)	ENTRANCE SECTION TOP RIGHT PLATE SUB-ASM	1						
2	7102-093	ASSEMBLY, STEP 4	1						
1	7102-094 (Sh.1)	ASSEMBLY, STEP 5	X						

		ITEM	DWG. NO.	DESCRIPTION	G1	G2	G3	REMARKS	REV.	
					QUANTITY					
<div>D</div> <div>7102-094</div> <div>SH. NO. 1 OF 3</div>	PRINT DISTR.	PLOT DATE: 12/5/2007 CAD FILE NAME: 7102-094.idw								
	CR-1	UNLESS OTHERWISE SPECIFIED: DIMENSIONS ARE IN INCHES; TOLERANCES ON: .0 ± .02 .00 ± .010 .000 ± .005 FRACTIONS ± 1/32 ANGLES ± 0.5° ALL SURFACES		<div><div>CORNELL UNIVERSITY</div><div></div><div>CORNELL UNIVERSITY Floyd R. Newman Laboratory Ithaca, NY 14853</div></div>						
			ERL INJECTOR CRYOMODULE ASSEMBLY, STEP 5 ASSEMBLY, STEP 5: ORTHO VIEWS							
	CHECKED BY: VM		DRAWN BY		DRAWN FOR		DATE		SCALE	
	APPROVED BY: VM		vm		M.Liepe		10/23/07		D	
REV.								7102-094	REV.	
								SH. NO. 1 OF 3		

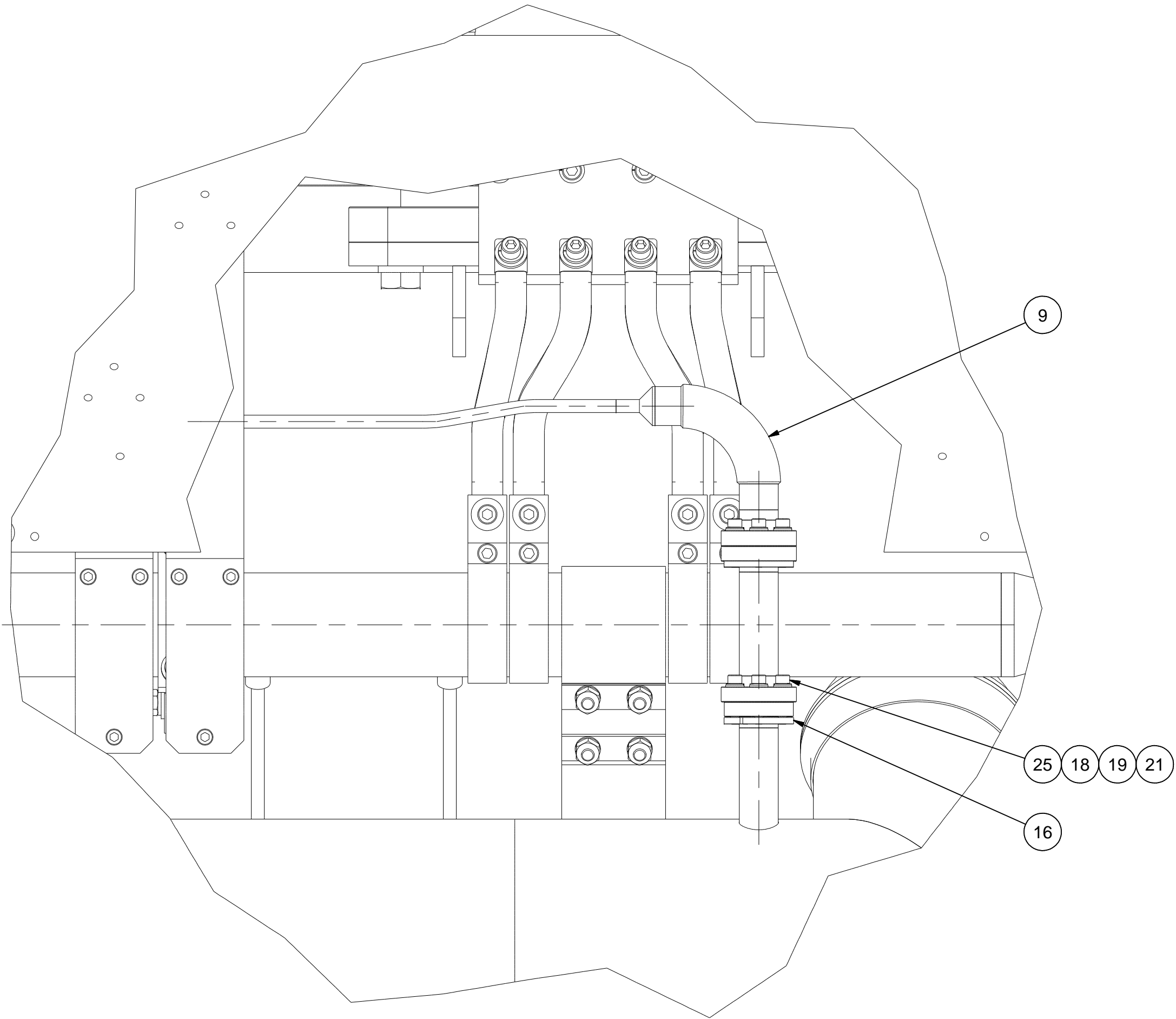
REVISIONS			
SYM.	ZONE	DESCRIPTION	DATE APP.



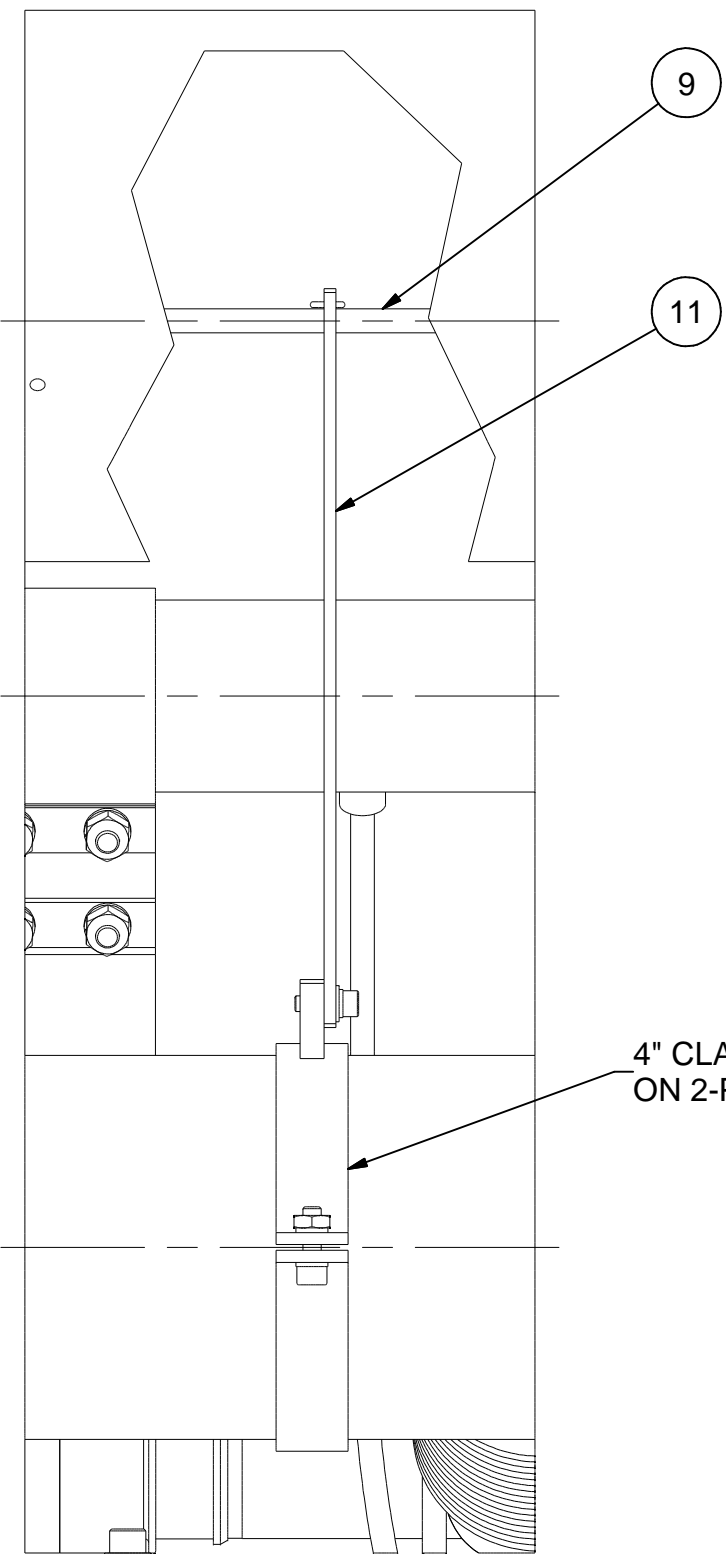
DETAIL B
SCALE 1:2



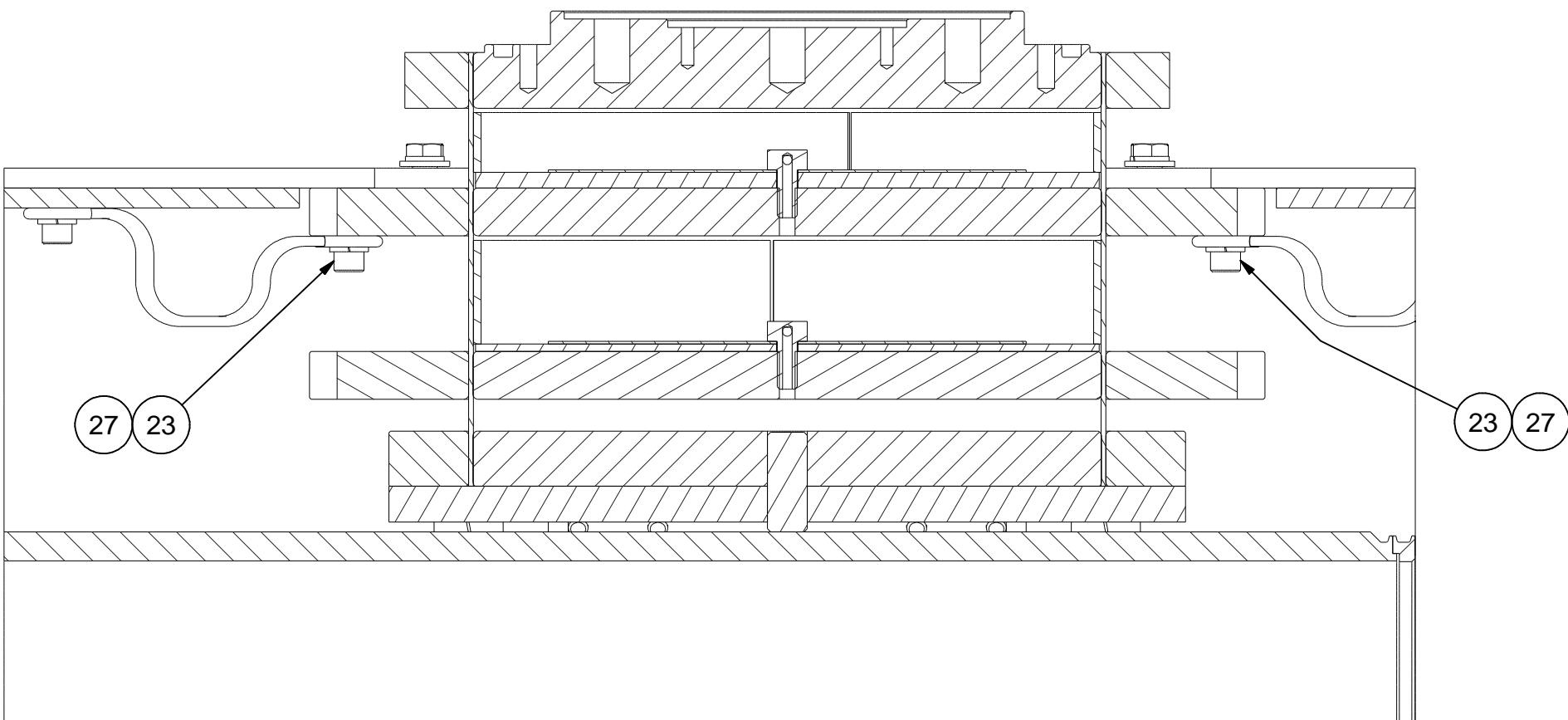
SECTION C-C
SCALE 1:2



DETAIL D
SCALE 1:2



DETAIL E
SCALE 1:2

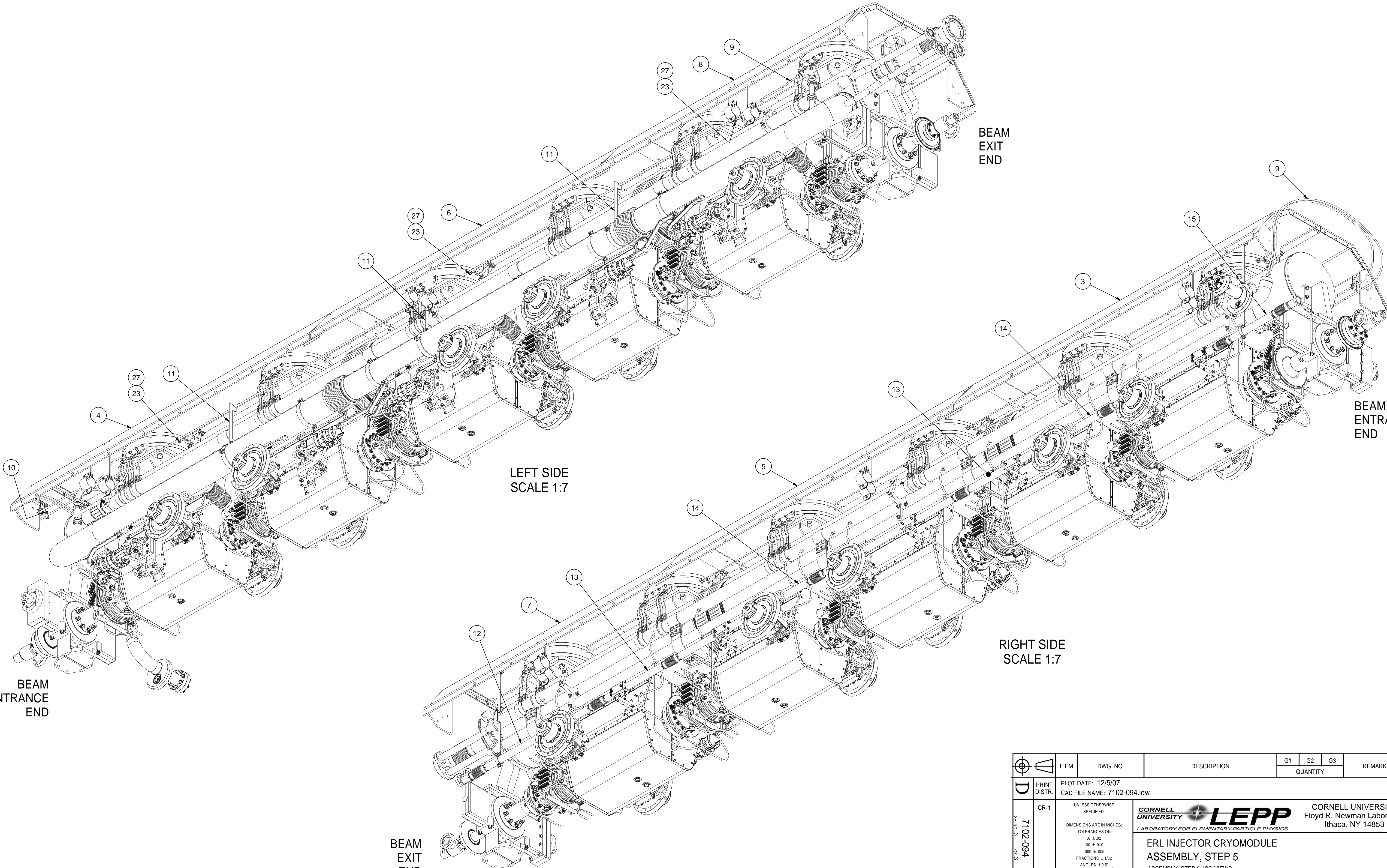


SECTION F-F
SCALE 1:2

SEE PREVIOUS SHEET
FOR ORIGINS OF THESE
SECTIONS AND DETAILS

		ITEM	DWG. NO.	DESCRIPTION			G1	G2	G3	REMARKS		REV.		
								QUANTITY						
<div>D</div> <div>SH. NO. 2 OF 3</div>	PRINT DISTR.	PLOT DATE: 12/5/07 CAD FILE NAME: 7102-094.idw												
	CR-1	<div>UNLESS OTHERWISE SPECIFIED: DIMENSIONS ARE IN INCHES: TOLERANCES ON: .0 ± .02 .00 ± .010 .000 ± .005 FRACTIONS ± 1/32 ANGLES ± 0.5° ALL SURFACES ✓</div>		<div><div><div>CORNELL UNIVERSITY</div><div><div>LEPP</div></div><div>LABORATORY FOR ELEMENTARY-PARTICLE PHYSICS</div></div><div>CORNELL UNIVERSITY Floyd R. Newman Laboratory Ithaca, NY 14853</div></div>										
	<div>ERL INJECTOR CRYOMODULE ASSEMBLY, STEP 5 ASSEMBLY, STEP 5: SECTIONS AND DETAILS</div>													
	REV.	CHECKED BY: VM APPROVED BY: VM		DRAWN BY vm	DRAWN FOR M.Liepe	DATE 10/23/07	SCALE	<div>D</div>	7102-094 SH. NO. 2 OF 3		REV.			

REVISIONS				
SYM.	ZONE	DESCRIPTION	DATE	APP.



		ITEM	DWG. NO.	DESCRIPTION	G1	G2	G3	REMARKS	REV.
					QUANTITY				
D	PRINT DISTR.	PLOT DATE: 12/5/07 CAD FILE NAME: 7102-094.idw							
	CR-1	UNLESS OTHERWISE SPECIFIED: DIMENSIONS ARE IN INCHES: TOLERANCES ON: .0 ± .02 .00 ± .010 .000 ± .005 FRACTIONS ± 1/32 ANGLES ± 0.5° ALL SURFACES		<div><div><div>CORNELL UNIVERSITY</div><div></div><div>CORNELL UNIVERSITY Floyd R. Newman Laboratory Ithaca, NY 14853</div></div><div>ERL INJECTOR CRYOMODULE ASSEMBLY, STEP 5 ASSEMBLY, STEP 5: ISO VIEWS</div></div>					
	CHECKED BY: VM APPROVED BY: VM		DRAWN BY vm	DRAWN FOR M.Liepe	DATE 10/23/07	SCALE	D	7102-094 SH. NO. 3 OF 3	REV.
7102-094 SH. NO. 3 OF 3									
REV.									